

2023-2024 Concurrent Placement Family Services Setting Briefing

Sep 2, 2023
Setting Coordinator: Ms. Ng Yee Ting

FAMILY

Provide an intimate environment in which physical care, mutual support and emotional security are normally available to foster the development of children into healthy and responsible members of society.



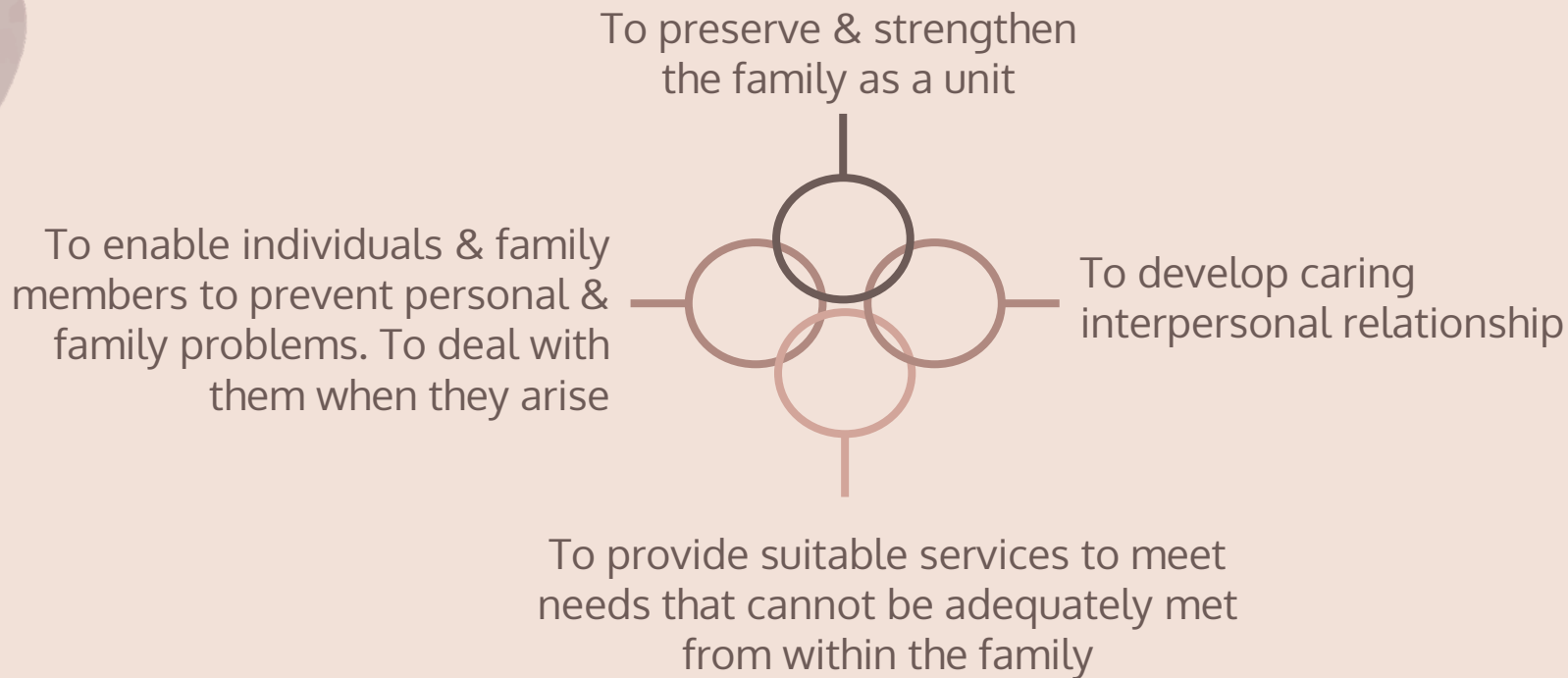
Family Social Work

The role of a family social worker...

Video 1

<https://www.youtube.com/watch?v=LuNYVQ58SCE>

Family and Child Welfare Services



List of Family & Child Welfare Services

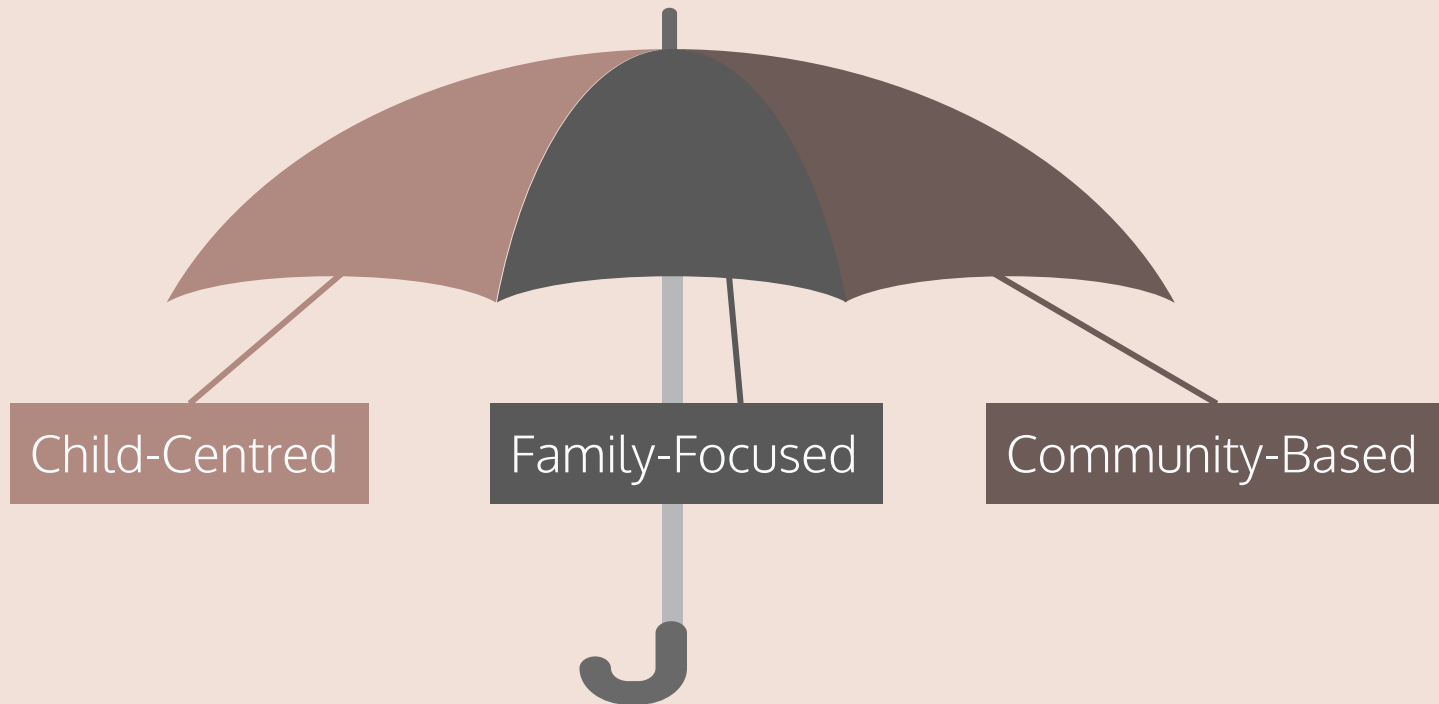
- Charitable/ Trust Funds
- Departmental Hotline Service
- Family Aide Service
- Family & Child Protective Services
- Child Care Services
- Compassionate Rehousing
- Family Crisis Support Centre
- Multi-purpose Crisis Intervention & Support Centre
- Family Life Education
- Foster Care
- Integrated Family Services
- Refuge Centre for Women
- Services for Street Sleepers
- Services for victims of sexual violence
- Suicide Prevention Services
- Temporary Shelter/Urban Hostel for Single Persons
- Website on Support for victims of child abuse, spouse/cohabitant battering & sexual violence
- Working Group/Advisory Committee
- Adoption Service
- Residential Child Care Services
- Victim Support Programme for Victims of Family Violence
- Short-term Food Assistance Service Team
- Cross-Boundary and Inter-Country Social Services
- Project on Child Care Training for Grandparents
- Specialised Co-parenting Support Centre (support service for divorced/separated families)
- Support Programme for Enhancing Peaceable Relationship
- Outreaching Teams for Ethnic Minorities

Integrated Family Services (Operated by SWD and NGO)

Main Objective

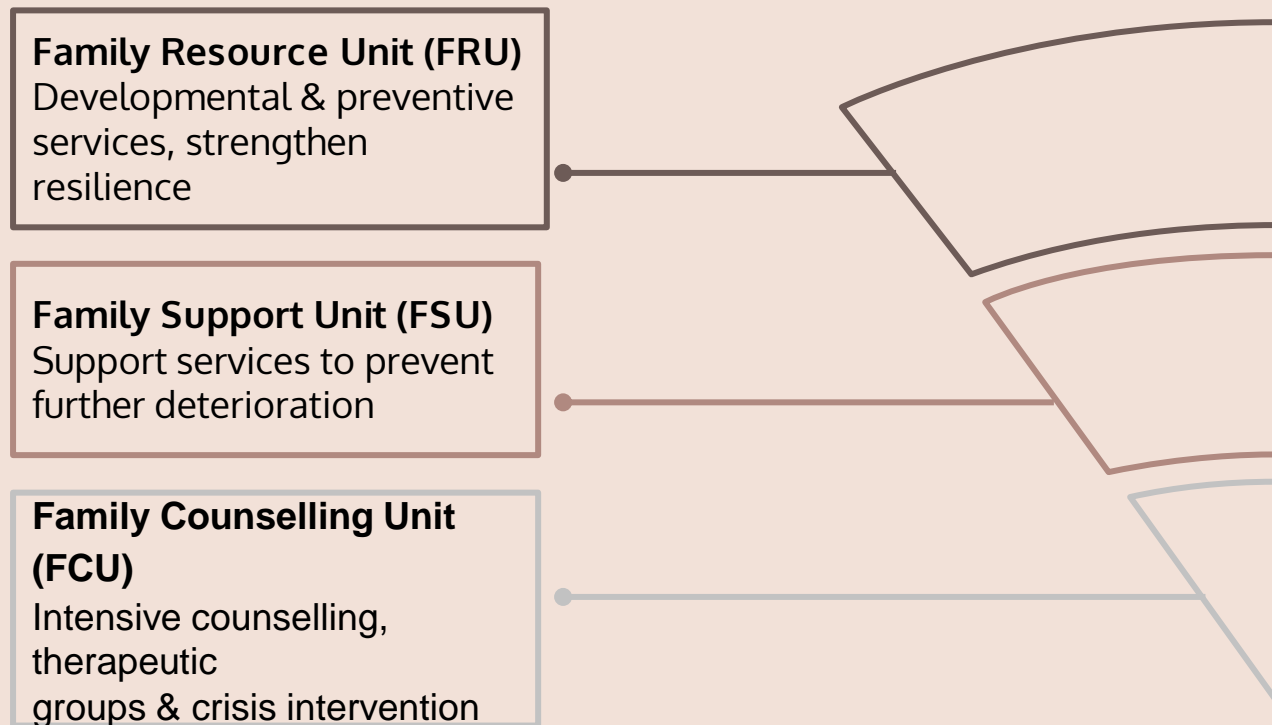
'Serve as a 'community -based integrated service centre focusing on supporting and strengthening families. '

Integrated Family Services (Operated by SWD and NGO)- Direction



Integrated Family Services

IFSC 3 Tiered Delivery Model



Integrated Family Services

Service Content

Enquiry service, resource corner, family life education, parent-child activities, group work service, program activities, volunteer training and service, outreaching service, counselling service and referral service

Target Group

Individuals and families in need with extended hour services.

IFSC Recommendation: Alternative Housing Assistance

- An inter-departmental referral mechanism between SWD and HD
- Nature : Public Rental Housing (PRH) transfer, splitting of PRH tenancy, addition of family member(s) to PRH tenancy and other housing assistance for PRH tenants and PRH applicants.

Short-term Food Assistance Service Team

Objectives

NGOs are commissioned to operate Short-term Food Assistance Service (STFAS) to help individuals and families who have difficulties in coping with their daily food expenditure.

Target group

- unemployed
- low-income earners
- new arrivals
- street sleepers
- individuals or families facing sudden change & immediate financial hardship

“An abnormal reaction to an abnormal situation is normal behavior.”

By Victor Frankl

An Austrian psychiatrist and neurologist as well as a Holocaust survivor.

Ref: Man's Search for Meaning (1946; 1959; 1984), p. 32 in the 1992 edition, ISBN 0807014265, Beacon Press



When working with a family and their children...

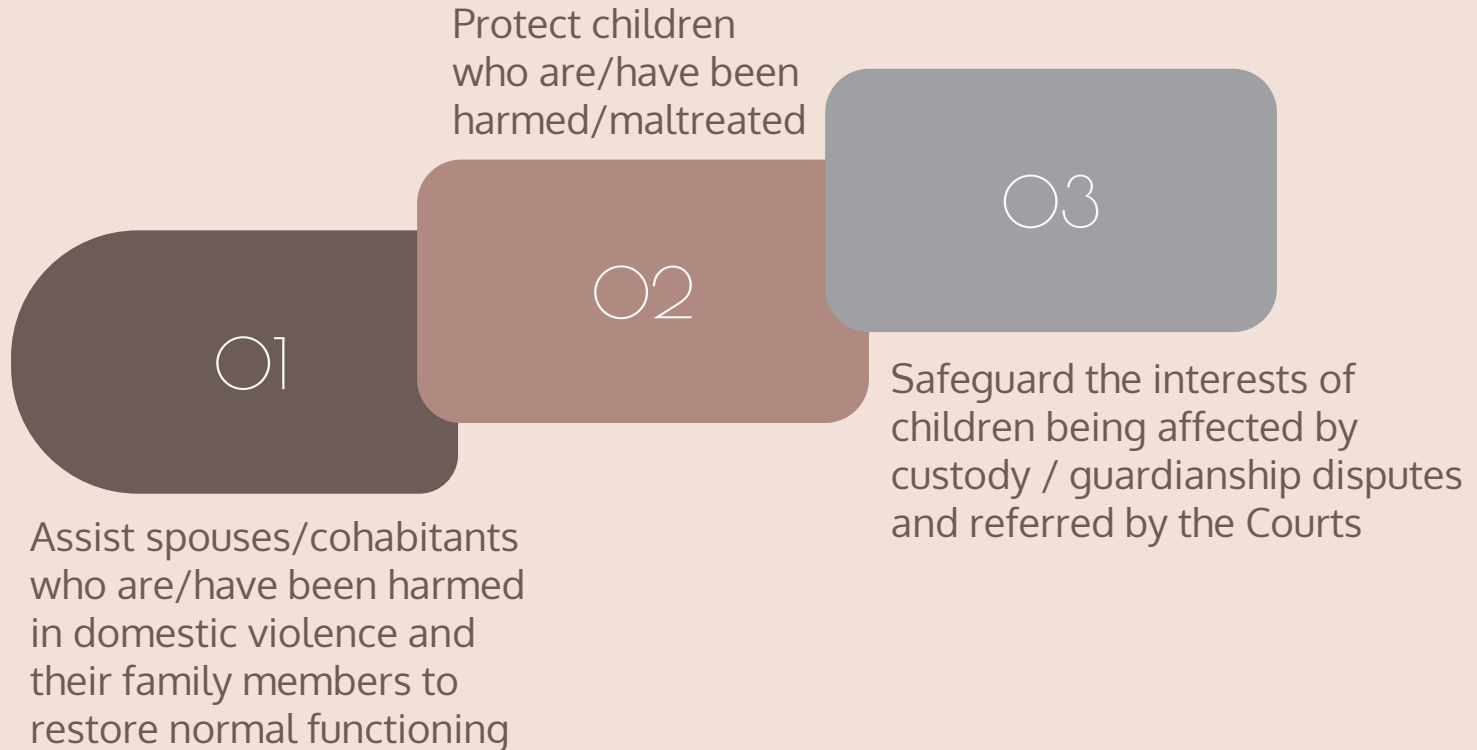
Assessment of needs

Video 2

<https://www.youtube.com/watch?v=xytRWbhNiG8>

Family and Child Protective Services (FCPSU)

Objectives



Family and Child Protective Services (FCPSU) Services

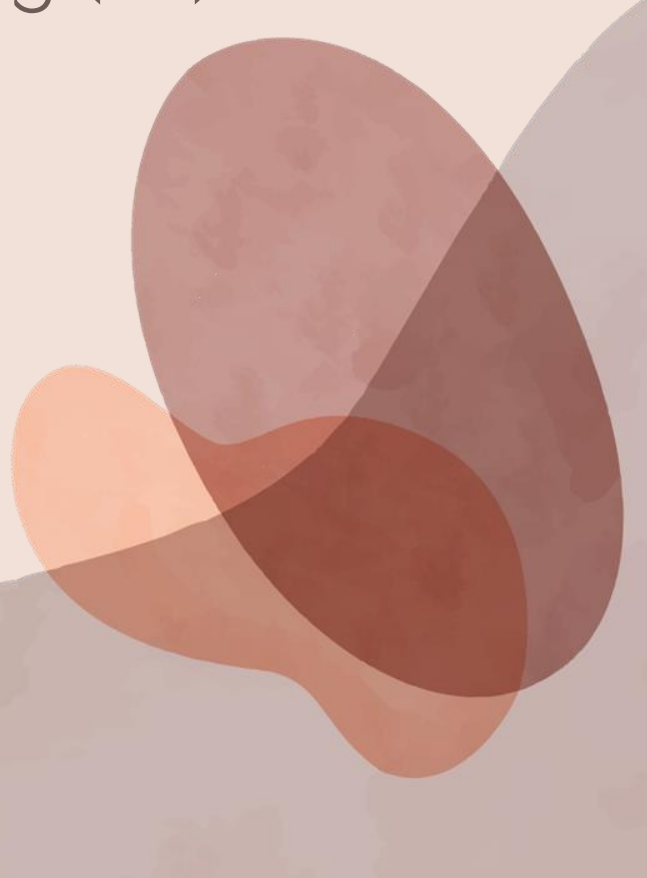
- Direct Services
 - outreaching, investigation, early intervention, statutory protection, casework and group work services.
- Supportive services including clinical psychological services, child care services, residential child care services, residential services for victims of domestic violence and family aide service
- Beware of envelope and phone number used; home visits risk assessment

Family and Child Protective Services (FCPSU) Services

- A multi-disciplinary approach is adopted in the handling cases of child protection and domestic violence.
- Work with the Police for joint investigation on certain cases and to conduct video-recorded interviews for taking statement with children having been harmed / maltreated, aiming to minimising their trauma during the course of investigation.
- Launch Public education programmes to arouse public attention.

Compassionate Rehousing (CR)

- Aim at providing housing assistance to individuals and families who have genuine and imminent long-term housing needs but, due to their special social and medical needs, have no other feasible means to solve their housing problem.
- To be assessed comprehensively by professional social workers with their centre-in-charge/ District Heads for recommendation to Housing Department.
- **Note**: Do **NOT** offer or mention to client prior to approval AND discussion with centre in-charge.



Caritas Addicted Gamblers Counselling Centre

Mission

- To assist those individuals and families affected by problem gambling establishing a healthy life.

Background

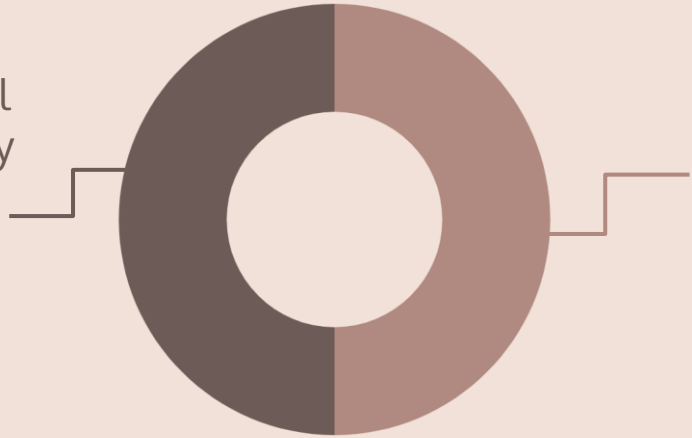
- Funded by the Ping Wo Fund of Home and Youth Affairs Bureau, was established on 15 October 2003.

Services

- Individual / Couple / Family Counselling
- Treatment / Support Group
- Debt Rearrangement
- Helpline & Email Counselling
- Gamblers' Counselling Information & Community Prevention Education
- Volunteer Service
- Certified Gambling Counsellors Training

Suicide Prevention Services

Provide support services to persons affected by suicidal behaviours (including family members & friends)



Services:

- 24-hour Suicide Prevention Hotline Service
- Suicide Prevention Services for the Elderly
- Services for Survivors of Suicide Loss
- Community & Life Education
- Volunteer Training & Support

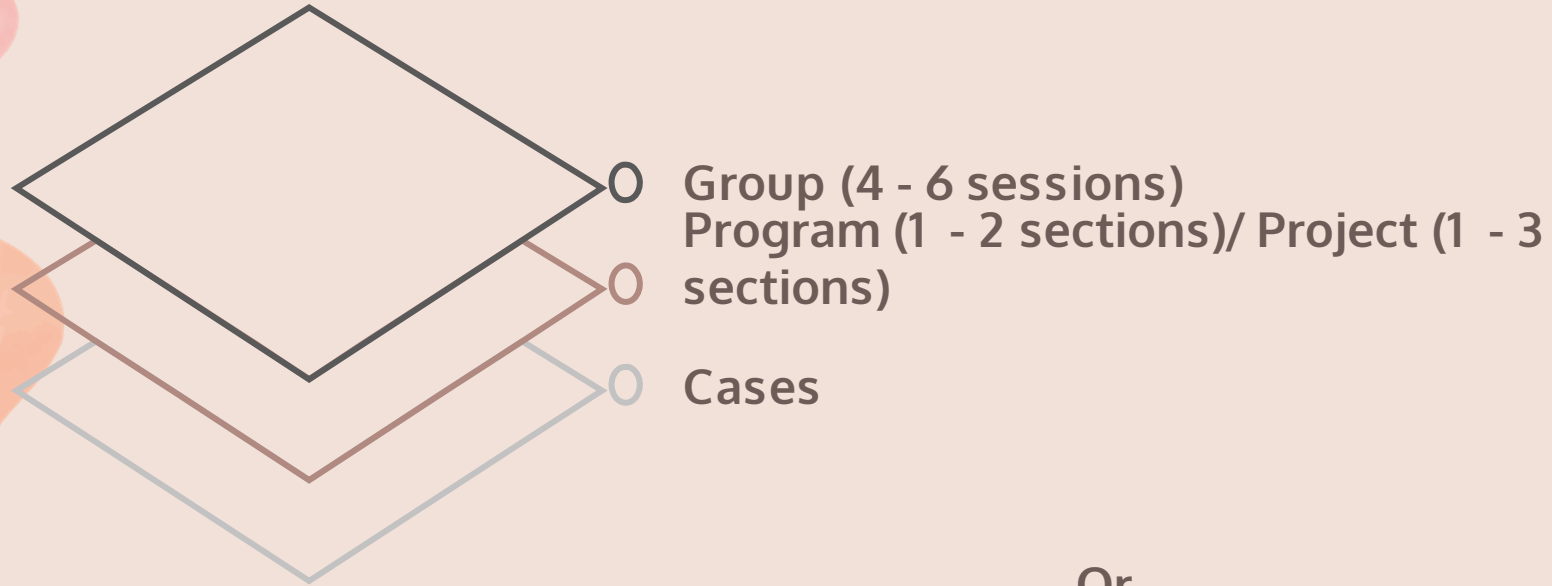
Suicide Risk Assessment Guide

- Psychosocial factors associated with risk for suicide and suicide attempts.
- These include recent life events such as losses (esp. employment, careers, finances, housing, marital relationships, physical health, and a sense of a future.
- Psychological states of acute or extreme distress (especially humiliation, despair, guilt and shame) are often in association with suicidal ideation, planning and attempts.
- These are warning signs of psychological vulnerability and indicate a need for mental health evaluation to minimize immediate discomfort and to evaluate suicide risk.

Procedural Guides

- Protecting Children from Maltreatment – Procedural Guide for Multi-disciplinary Co-operation (Revised 2020)
- Procedural Guide for Handling Intimate Partner Violence Cases (Revised 2011)
- Procedural Guidelines for Handling Adult Sexual Violence Cases (Revised 2021)

Assignments (A-O3)



Or
Cases/ G&P only

First Placement

- 2 Cases + 1 Group + 1 Program

or

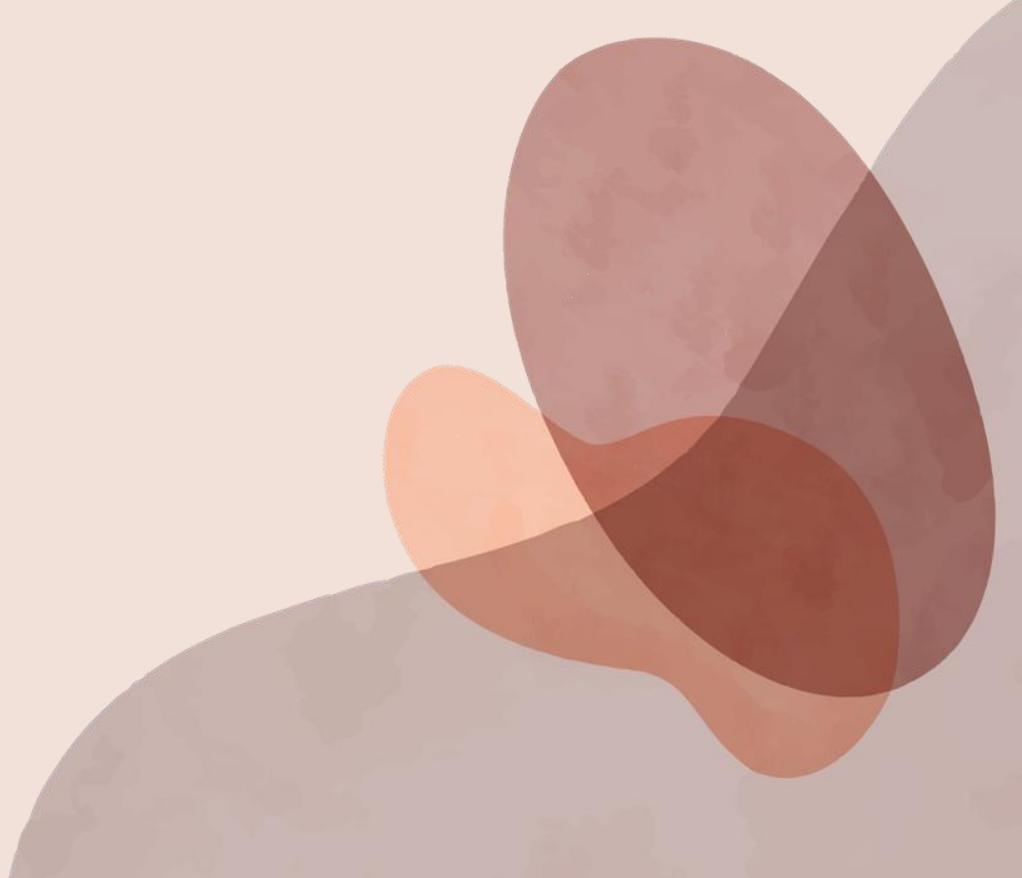
- 2 Groups + 1 Program

or

- 4 cases (At least)

or

- 1 – 2 CD Project



Second Placement

- 3 Cases + 1 Group + 1 Program

or

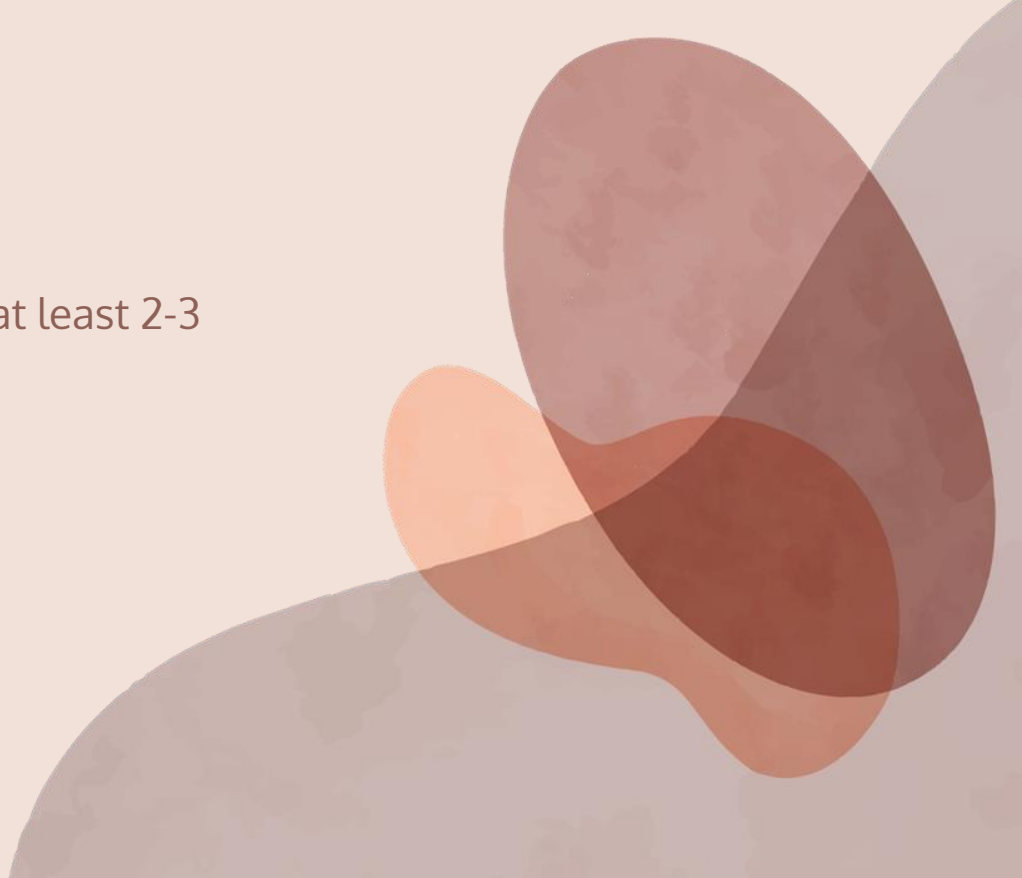
- 2 Groups + 1 Program + 1 Project (at least 2-3 sections)

or

- 5 cases (At least)

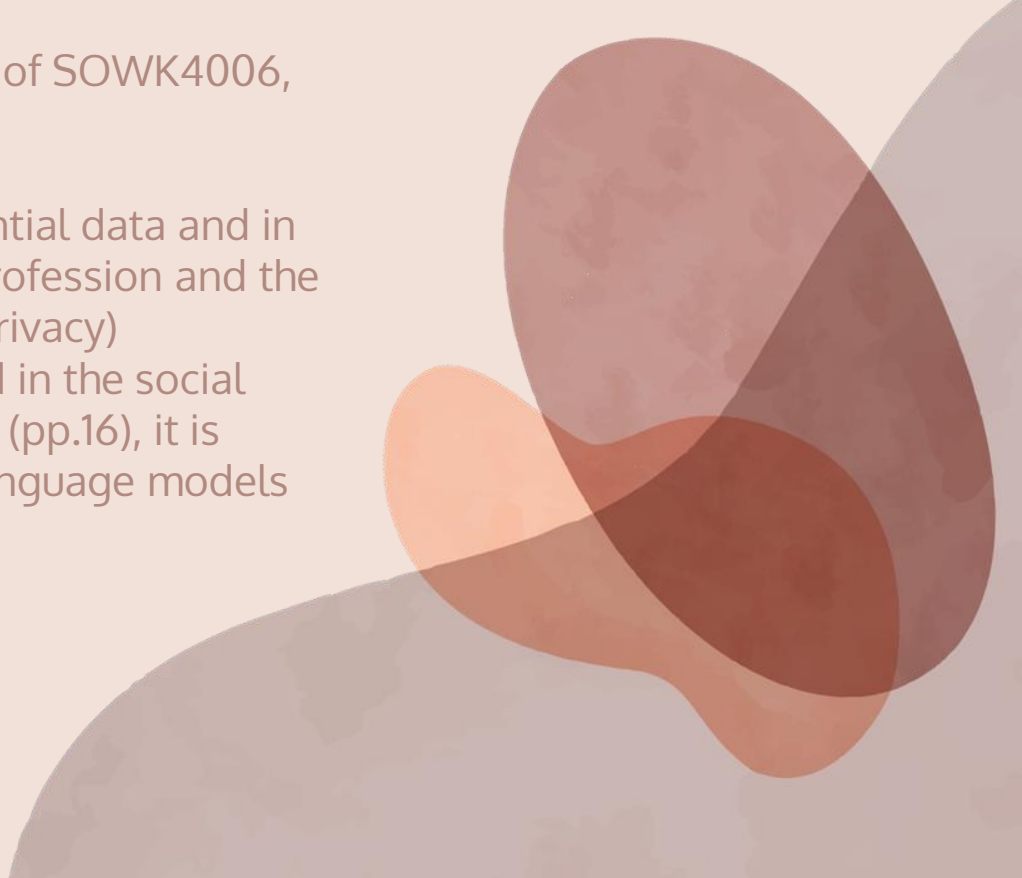
or

- 2 CD Project



AI generated language models

- As per the 2023 – 24 course outlines of SOWK4006, 4007, 6225 & 6231
- 'In order to maintain clients' confidential data and in line with the ethical practice of the profession and the requirements of the personal data (Privacy) Ordinance, 1995, which are reiterated in the social work fieldwork placement handbook (pp.16), it is prohibited to use the AI generated language models for fieldwork courses.'



Group

Parent/adult:

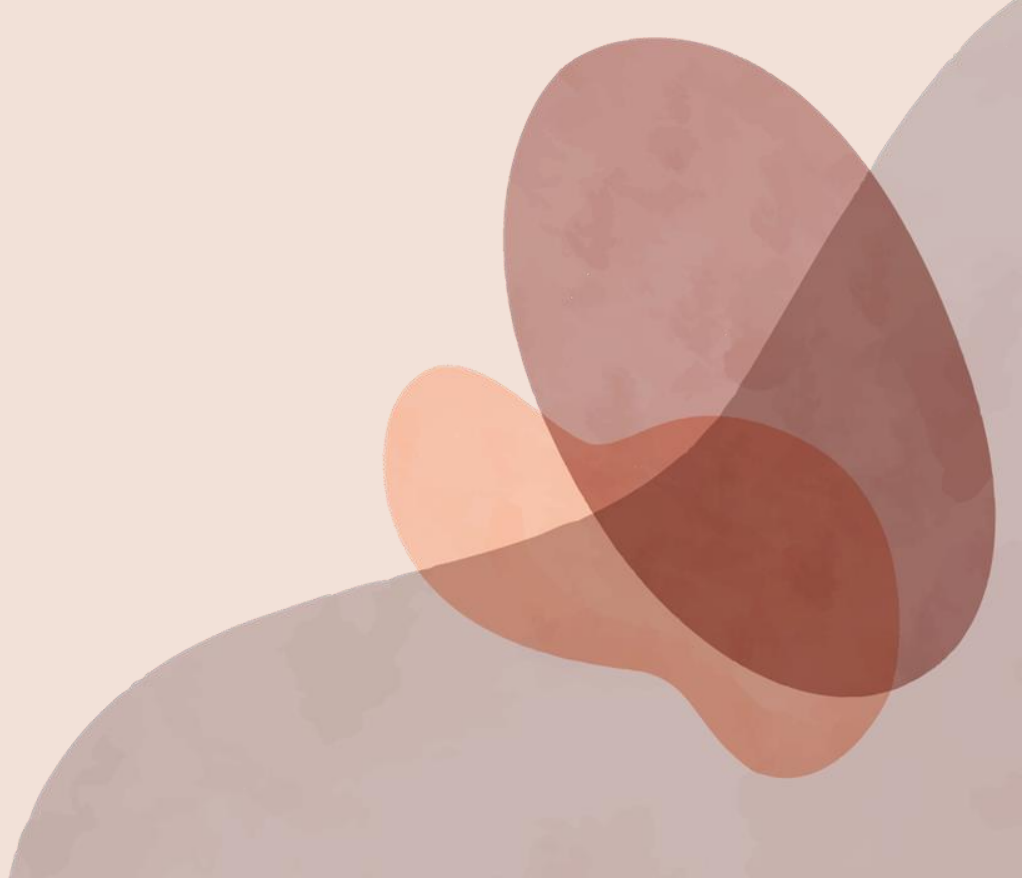
- Parenting skills training
- Self Care
- Parrell Group: parent child communication
- Stress/Emotional management
Communication
- Networking against Loneliness



Group

Children group:

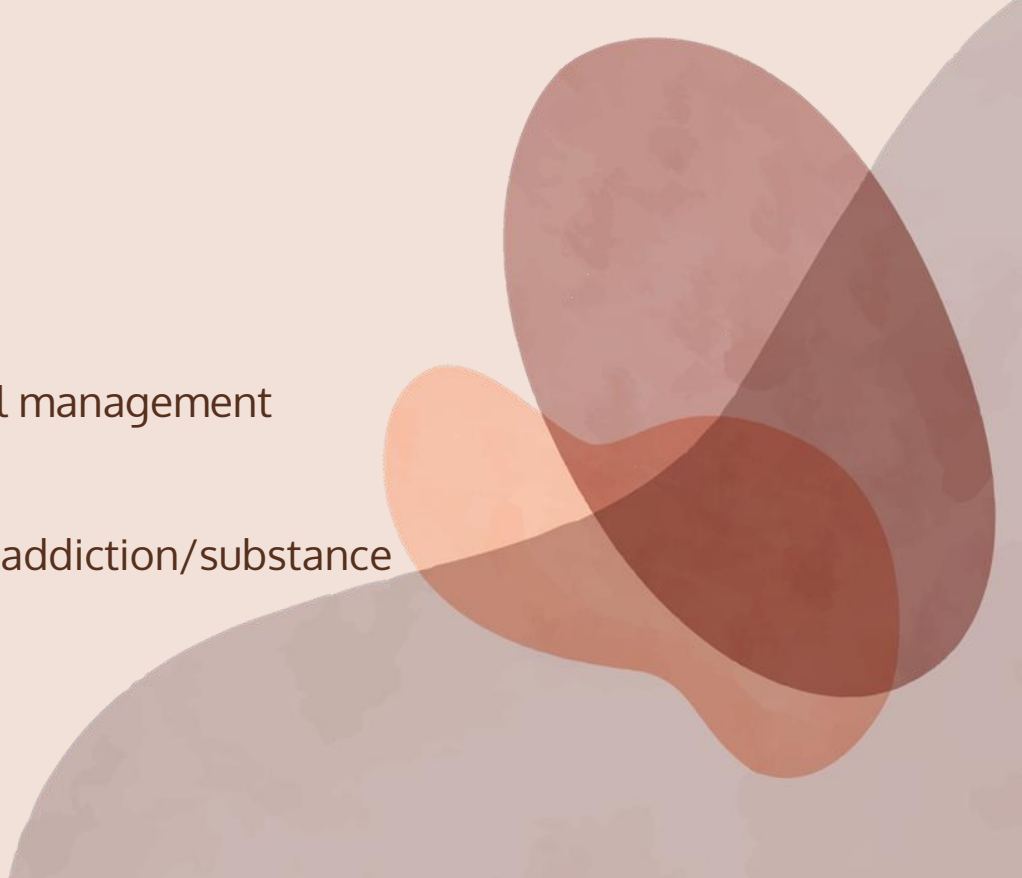
- Resilience Building group
- Emotional/Stress management
- Social Skills Training
- Volunteer Training
- Leadership Training



Case


Counselling:

- Family relationship
- Marital relationship
- Emotional/Stress challenges
- Parenting : SEN, study, emotional management
- Mental Health
- Risk Taking Behavior :Self Harm, addiction/substance abuse, delinquent....



Case

Tangible:

- Recommendation for Split Household for CSSA (SWD IFSC only)
 - Recommendation for Alternative Housing Assistance (SWD IFSC only)
 - DCA application
 - Pre School-Rehabilitation Services application e.g. EETC, OPRS, SCCC
 - Referral for Food Assistance, ICCMW, shelter, financial assistance, temporary housing
- 

Program

Examples:

- Family Day Camp – 5 Love Languages, Positive communication
- Play Fun – The importance of Play
- Parent Child Sex-Education – Protect your Body
- Road Show – Mental Health, Suicide Prevention, Against Child Abuse

Attitude



**Punctual
& Early Preparation**



**Self-initiative to learn
from service team**



**Conscientious, Moral &
Responsible**



**Polite, Respect
& Care**



**Accountable &
Social Media**



**Self-discipline
good time & work
management**



**Flexible & willing to
shoulder additional
duties**

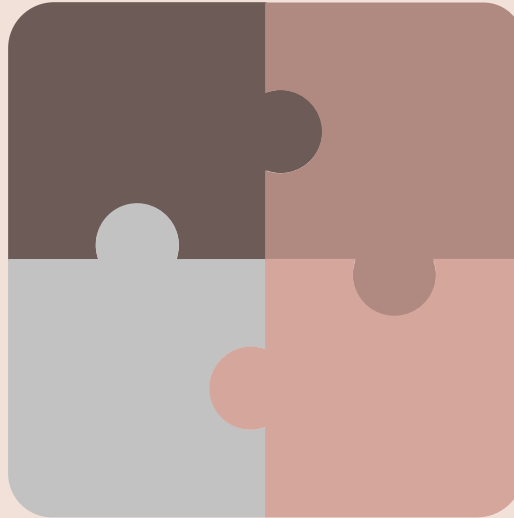


**Blend into
the team
& Dress code**

Knowledge/Skills

Community
Resources &
Services

Needs of
Different Service
Users



Relative Conceptual &
Intervention Models,
Risk assessment

Communication
Skills

Agency Visit

Agency	The Hong Kong Catholic Marriage Advisory Council - KID First Specialised Co-parenting Support Centre (HK)
Date	Oct 3, 2023 (Tues)
Time	2:30 pm– 5:00 pm
Venue	Unit A-E, 7/F, Eastern Commercial Centre, 397 Hennessy Road, Hong Kong

Agency Sharing

Agency

TBC

Date

TBC

Time

10:00 am – 12:00 pm

Venue

HKU

Mid-Placement Sharing

Date	Jan 10, 2024 (Wed)
Time	10:00 am – 12:30 pm
Venue	HKU (TBC)
Agency	Tung Wah Group of Hospitals - PRIDE Line

All Agency Visit, Sharing and Mid-Placement Sharing are Compulsory

- Counted as placement hours, please inform Agency IC in advance
- Travelling time between venues & Lunch hours are counted for students:
Agency Visits
 - who attended whole day visits; or,
 - who attended one visit and need to return or depart from fieldwork agency due to work duties
- Mid-placement Sharing
 - who return to the fieldwork agency for work duty after the sharing
- Mark clearly in Placement Hours Record Form (C-01a)
- Note: Orientation today is also counted as placement hours

Family Setting Coordinator

Name	Ms. Ng Yee Ting
Email	oytng@hku.hk
Tel. No.	3917-2070
Office	Rm 555, The Jockey Club Tower, Centennial Campus

THANKS

Do you have any questions?

